

US FDA Trial Data Summary

Myopia Study

Eyes treated: 901
Treatment Range approved: up to -12 D sphere with up to -6D astigmatism

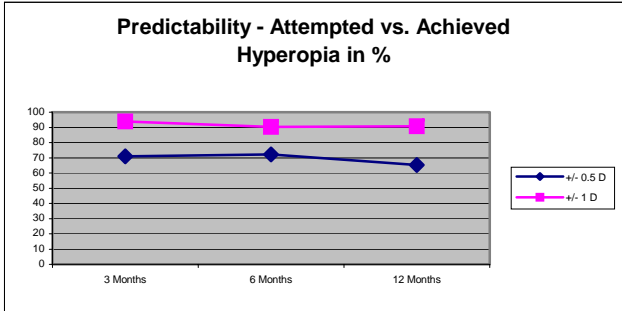
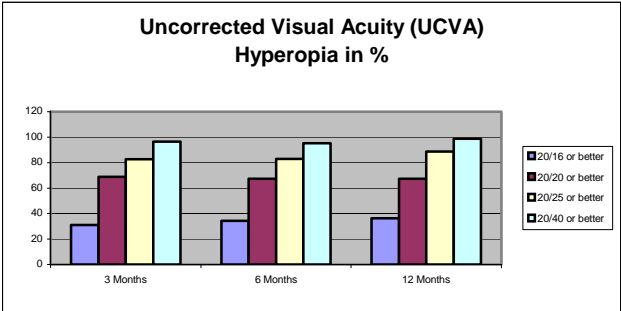
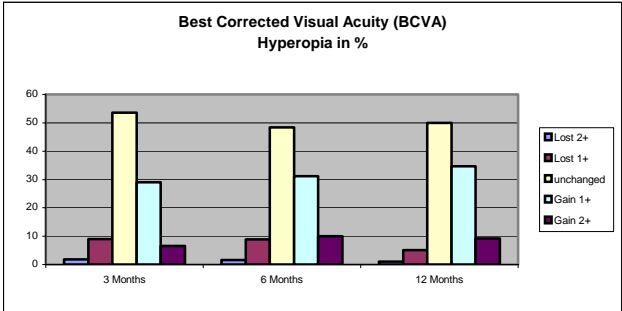
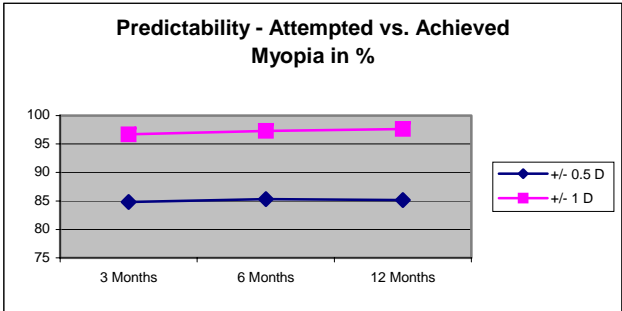
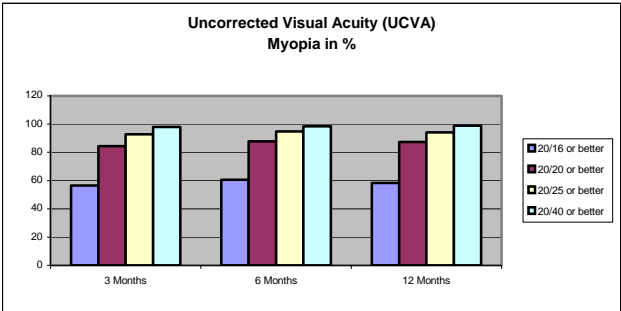
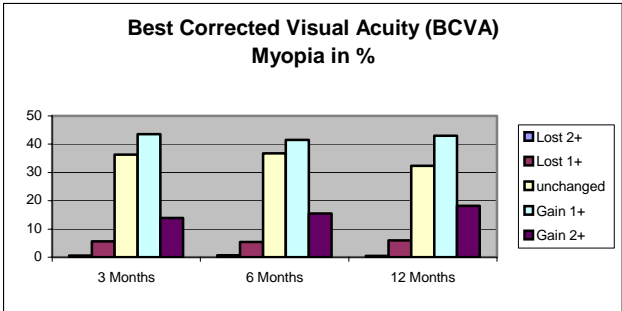
Accountability in %			
	3 Months	6 Months	12 Months
	93.8	91.9	93.9
Best Corrected Visual Acuity (BCVA) in %			
	3 Months	6 Months	12 Months
Lost 2+	0.59	0.73	0.49
Lost 1	5.69	5.38	6.03
Unchanged	36.26	36.8	32.35
Gained 1	28.99	31.15	34.69
Gained 2+	13.86	15.52	18.2
Uncorrected Visual Acuity (UCVA) in %			
	3 Months	6 Months	12 Months
20/16 or better	56.58	60.61	58.33
20/20 or better	84.38	87.72	87.44
20/25 or better	92.74	94.88	94.1
20/40 or better	98.03	98.34	98.97
Accuracy of Manifest Refractive Predictability in %			
	3 Months	6 Months	12 Months
+ / - 0.5D	84.83	85.33	85.12
+ / - 1D	96.68	97.31	97.66

Hyperopia Study

Eyes treated: 290
Treatment Range approved: Up to +6D of sphere with up to +5D of astigmatism

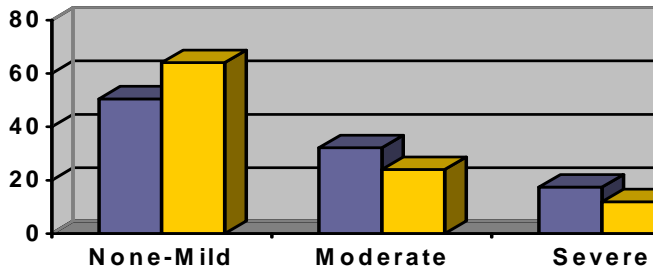
Accountability in %			
	3 Months	6 Months	12 Months
	95.2	93.9	69.9
Best Corrected Visual Acuity (BCVA) in %			
	3 Months	6 Months	12 Months
Lost 2+	1.81	1.54	1.02
Lost 1	9.06	8.85	5.1
Unchanged	53.62	48.46	50
Gained 1	28.99	31.15	34.69
Gained 2+	6.52	10	9.18
Uncorrected Visual Acuity (UCVA) in %			
	3 Months	6 Months	12 Months
20/16 or better	31.11	34.43	36.25
20/20 or better	68.89	67.45	67.5
20/25 or better	82.67	83.02	88.75
20/40 or better	96.44	95.28	98.75
Accuracy of Manifest Refractive Predictability in %			
	3 Months	6 Months	12 Months
+ / - 0.5D	71.01	72.31	65.31
+ / - 1D	93.84	90.38	90.82

US FDA Trial Data Summary

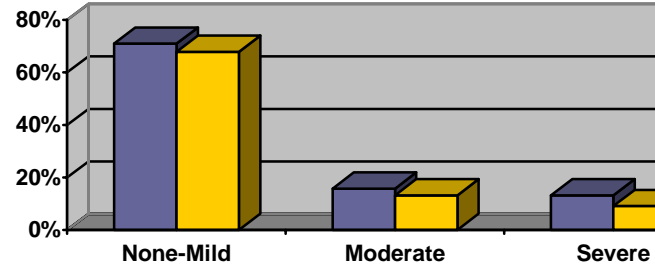


US FDA Trial Subjective Quality of Vision

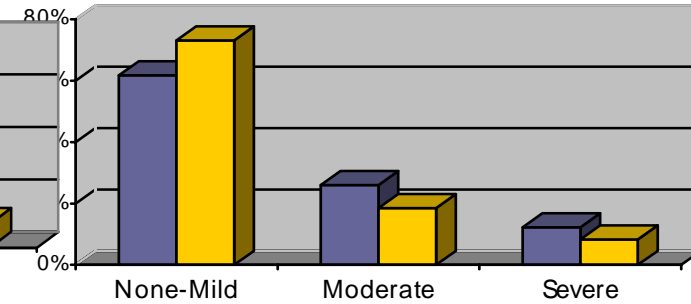
Night Driving Glare



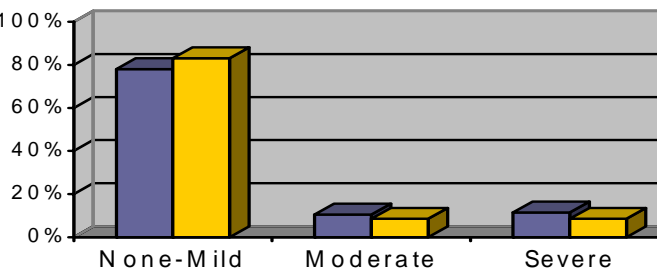
Halos around Lights



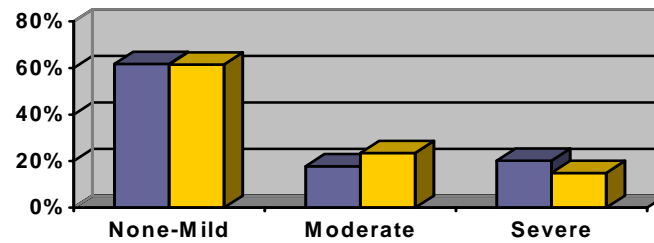
Light Sensitivity - Myopia



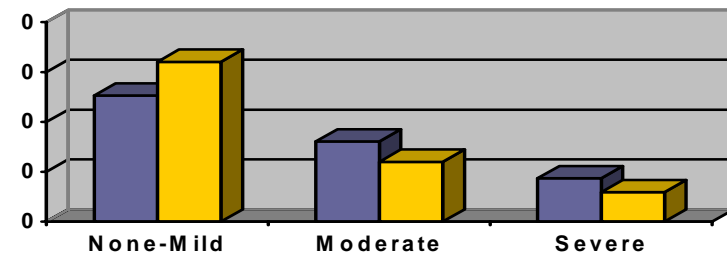
Night Driving Glare - Hyperopia



Halos around Lights



Light Sensitivity - Hyperopia



Pre-Op

Post-Op

Source: Hyperopia Study, preop data , 6 month outcomes

Source: Myopia Study, preop data , 3 month